

Videohub Control

No other router has more control options than Videohub!

Now you can control your router from anywhere in your building. Videohub routers use ethernet for the control panel connections so you can select from a wide range of hardware rack mount panels or control your router from your Mac, PC or even iPad! You can even customize your own control solutions using the Videohub developer SDK!

Videohub Smart Control



New Videohub Master Control

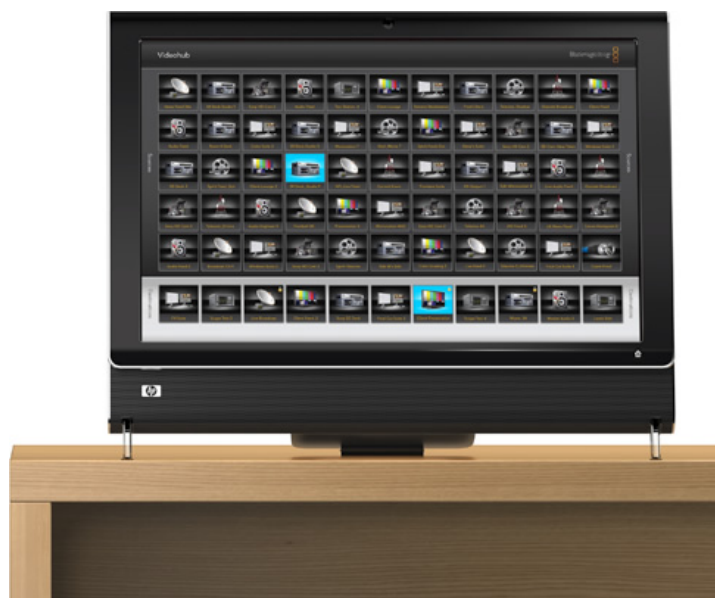


Widest Range of Control Options

Videohub routers have more control options because you can select from hardware panels or innovative software control panels that let you route cross points on your desktop! If you're using Mac or PC based editing and design systems, routing from your desktop costs nothing and saves space in your studio. In larger installations you can select from the Videohub Master Control, which is a full rack mount spin knob controller with direct label entry and elegant LCD display to see your router status, giving you control over every crosspoint on the largest Videohub model. If you want cut-bus style routing, then the Videohub Smart Control features 40 customizable buttons that can be set to any router label. Videohub Smart Control can be setup for 1, 2 or more destinations, as well as macros and more!

Route From Your Desktop

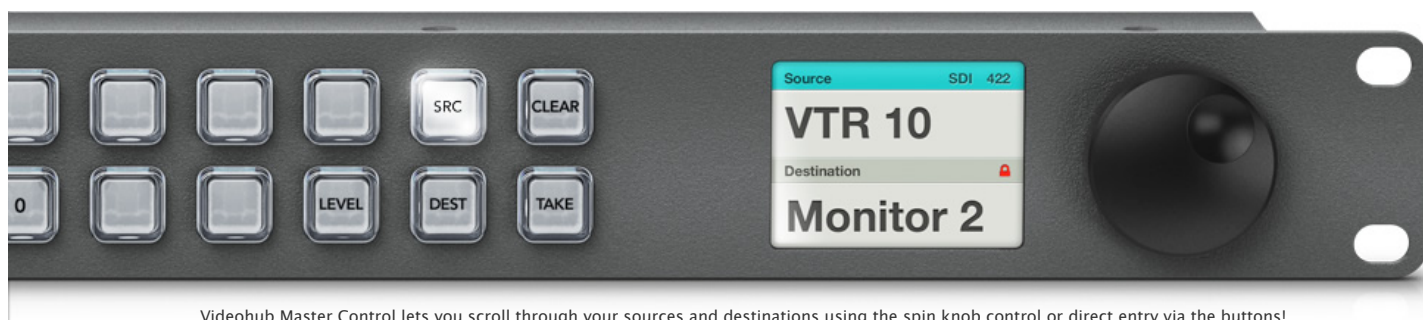
With so much post production equipment based on desktop computers these days, the best place to control your router is right from your desktop! All Videohub models include free software so you can simply install on your Windows or Mac, and get an incredibly attractive icon based router control panel. You can install on as many computers as you like! The Pushbutton view allows you to see images in the buttons of common video equipment. If you want the most incredible XY control panel, then Pushbutton view looks fantastic when installed on a dedicated all in one computer with touch screen such as a HP TouchSmart, with all routing performed by pressing buttons directly on screen!



Hardware Control Panels

When you are working in larger facilities with rack mounted equipment then you need a serious hardware based control panel! You can choose from two compact, 1 rack unit sized hardware control panels. Videohub Smart Control features 40 crystal look WRGB illuminated buttons that can be set to any router output. To set the input to any SDI equipment

now just requires a single button press! Videohub Master Control allows direct button entry or scrolling using the spin knob to access any source or destination, even on the largest Videohub router. Simply type in the label, or scroll the knob! You can see the source and destination on the built-in LCD that features beautiful anti aliased fonts for an extremely attractive user experience!



Videohub Master Control lets you scroll through your sources and destinations using the spin knob control or direct entry via the buttons!



Single or Multiple Destinations

Even though Videohub Smart Control is a cut bus type of hardware control panel, it's smart enough to allow multiple destinations! If you want a true cut-bus, such as when dedicating the control panel to a video monitor, just select to a single destination and then all buttons are sources that change the route to that destination when pressed. Of course the full Videohub Master Control lets you scroll through every single destination on the router so you can always select any destination and any source for full XY access to the router, all from a tiny 1 rack unit control panel. Videohub Master Control gives you everything!



You can program each button to be a specific router crosspoint and then remove the front panel to easily label the crystal look buttons!

Easy to Install

No router panel is so easy to install! You can customize buttons, sources and destinations using the easy to use Windows and Mac software included with each Videohub control panel. To setup the panel, just connect to the built in USB connection and then run the software! You can select where the Videohub is on your network, as well as how many destinations you want on the panel. You can even select the backlighting brightness, as well as if you want a "take" button!

Easy to Use

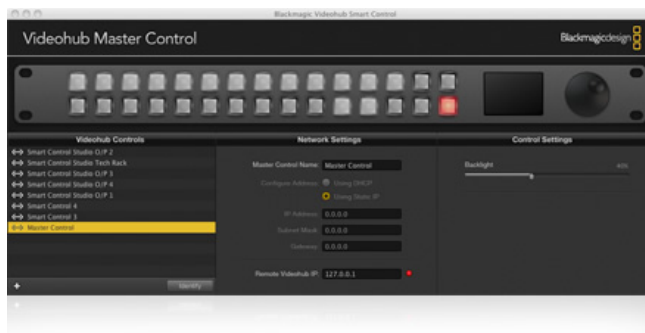
Videohub control panels are incredibly easy to use! Simply install Videohub Smart Control under a monitor, then the output of the router you have connected to that monitor can be set to a different source each time a different button is pressed. That's a "cut-bus" style of router control and is extremely fast to use! Just punch along the buttons to look at anything on your router. Install under broadcast decks or edit suites so you can set the video input the same way. If you want full control of every crosspoint on your router from a single control panel, then Videohub Master Control simply allows you type in the cross-point directly or even easier, just spin the knob and see all your sources and destinations scroll by! You can even set to use a take button! It's just as simple on your Mac or PC where you can also setup simple graphic buttons for the simple and elegant router panels on your computer!



Once you have selected the source or destination you want, simply press take and your route will become active!

Elegant Design

Router control panels don't need to be ugly, and Videohub hardware control panels have been designed to fit into the most creative post production facilities and broadcasters! You get attractive crystal look buttons that are illuminated by both RGB and white LEDs so that a wider range of rich and clean colors can be displayed. Videohub Master Control lets you see everything with an extremely elegant LCD display that keeps you fully aware of your router status. Videohub hardware control panels allow the front panel can be unscrewed and slid off so labels can be inserted under the buttons. You get Adobe Illustrator™ files with crop marks that you can use as templates to generate your own custom labels! All buttons can be variably backlit so you can always read button labels even in dark rooms! Videohub hardware control panels use only a single rack unit and are less than an inch thick!



Connects via Ethernet

Videohub Smart Control and Videohub Master Control use standard ethernet networking so you can simply plug into the existing computer network. If you want to use your Videohub in mission critical environments, you can even connect Videohub control panels to routers via a dedicated ethernet switch. Videohub Smart Control and Videohub Master Control feature power over ethernet so if used with an ethernet switch that includes power over ethernet support, then no power supply is required. For non powered ethernet switches, we also included a power supply with international power socket adapters. Videohub hardware control panels also include loop through ethernet connections, perfect for looping to other control panels or computers! You can chain dozens of control panels so you save hundred's on ethernet cabling.



Choose from two fantastic Videohub Control models



Videohub Master Control

Scroll through your router sources and destinations with the easy to use spin knob control or via direct button entry. You can also see your router status in the beautiful LCD display. Videohub Master Control is compact and powers via DC or Ethernet! \$695



Videohub Smart Control

Route with a single button press! Videohub Smart Control lets you work as a cut bus control panel where all buttons can be programmed as separate sources. You can also select multiple destinations and a take button. Powers via DC and Ethernet. \$495

Next: Workflow

Micro Videohub	16 x 16 3G-SDI 1 RU router with ethernet router control.	\$1,495
Smart Videohub	16 x 16 3G-SDI 1 RU router with front panel buttons and ethernet control.	\$1,995
Studio Videohub	16 x 32 3G-SDI and 16 deck control 2 RU router with USB hosted ethernet control.	\$2,995
Compact Videohub	40 x 40 3G-SDI 2 RU router with ethernet router control.	\$2,995
Broadcast Videohub	72 x 144 3G-SDI and 72 deck control 8 RU router with USB hosted ethernet control.	\$14,995
Videohub Smart Control	40 button control panel for XY or single destination control. Supports ethernet.	\$495
Videohub Master Control	Spin knob and direct entry control panel with LCD status. Supports ethernet.	\$695